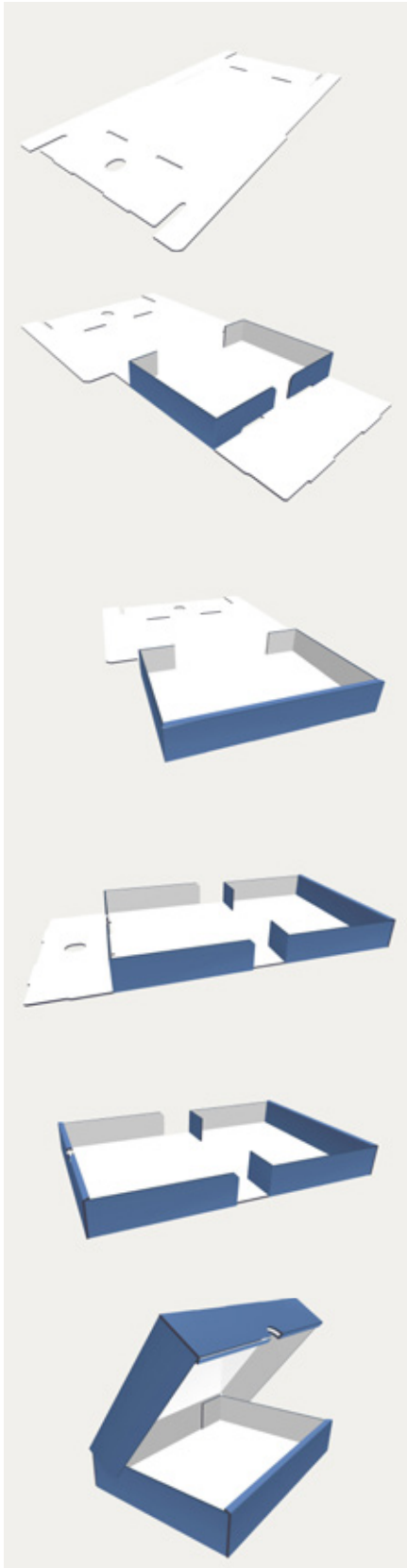


## Clamshell boxes – KS 3

### Folding instructions



1. The precut pattern of your folder should be placed on the table with the natural white coloured side facing towards you.
2. Fold all the prefluted edges vertically at a 90 degree angle, once facing upwards and thereafter back again. Set up the side segments of your box right-angled.
3. Bend the double-walled side segments inwards over the edges.
4. Please pay particular attention to the spigot (double-fold) of the long edges at the front and back sides.
5. Insert the side flaps into the slits provided. Make sure the flaps snap in properly.
6. Finally you may close the clamshell box. By doing so, tight movable folds may possibly get stretched and hence become more flexible.

*We have manufactured your product with utmost care and accuracy.*

*Should you still have difficulties in folding your box, please do not hesitate to contact us. We will gladly assist you.*

*Please visit the following site for the animated version of the folding instructions:*

*<http://www.movies.klug-conservation.com>*

### KLUG-CONSERVATION

Zollstraße 2

87509 Immenstadt/Germany

Tel. +49 (0)8323 9653 30

[www.klug-conservation.com](http://www.klug-conservation.com)

