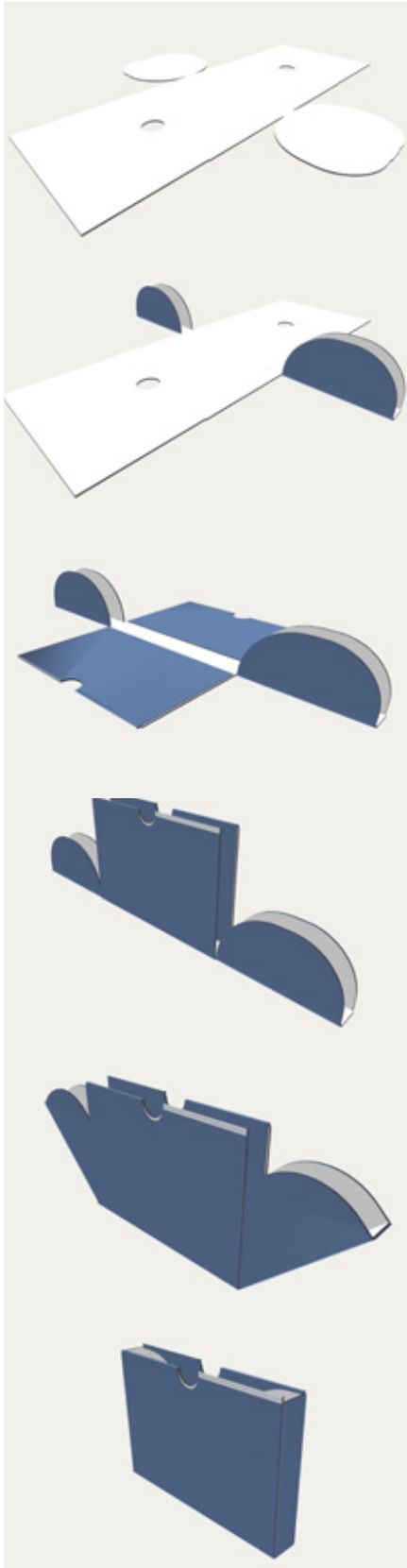


## Slipcases – KS 5

*Folding instructions*



1. The precut pattern of your folder should be placed on the table with the natural white coloured side facing towards you.
2. Fold all the prefluted edges vertically at a 90 degree angle, once facing upwards and thereafter back again. Set up the side segments of your box right-angled.
3. Bend the double-walled side segments inwards over the edges. Please pay particular attention to the spigot (double-fold).
4. Bend the side segments of the box inwards and hold them vertically (right-angled).
5. Set the flaps of the "ears" upright, right-angled, and fit them in to the slits provided between the side segments. While doing so, press inwards and downwards towards the base of the box.
6. Repeat this procedure on the other side aswell.

*We have manufactured your product with utmost care and accuracy.*

*Should you still have difficulties in folding your box, please do not hesitate to contact us. We will gladly assist you.*

*Please visit the following site for the animated version of the folding instructions:*

*<http://www.movies.klug-conservation.com>*

### **KLUG-CONSERVATION**

Zollstraße 2

87509 Immenstadt/Germany

Tel. +49 (0)8323 9653 30

[www.klug-conservation.com](http://www.klug-conservation.com)

