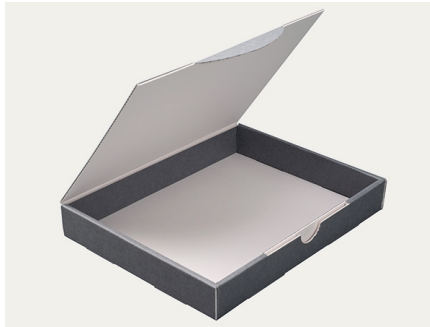


## Technical data sheet

Archival Box - KS 13



### Specifications:

A clamshell type storage box with roundabout, double-walled construction for additional strength. Smooth interior surfaces. On request also available with box partitions (dividers). Suitable for the storage of microfiches, postcards and film negatives.

### Sizes ex-stock:

refer to our website [klug-conservation.com](http://klug-conservation.com)

### Material characteristics:

#### Base paper

- 100% bleached cellulose
- without the usage of recycling fibres
- free of wooden fibres
- Kappa level < 5 = lignin-free
- pH 7.5 - 10.0 = acid-free (in accordance with ISO 6588-1:2020)
- alkaline buffer > 2% natural calcium carbonate (GCC)
- sizing: neutral/synthetic (without alum additive)
- top surface sizing: Cobb<sub>60</sub> in accordance with ISO 535 < 25
- without optical brightening agents
- light-fastness approx. 7 – 8 (= extremely good) in accordance with the wool scale (EN ISO 105-B02)
- no bleeding in accordance with DIN ISO 16245:2012
- high abrasion resistance in accordance with DIN 53109:2008
- Photographic Activity Test (PAT) passed in accordance with ISO 18916:2007

#### Glue used for the corrugated board

- starch-based adhesive
- pH > 8.0
- moisture-proof gumming

Further information, such as our Quality Guarantee, certificates of independent testing institutions and information regarding application methods and instructions are stated on our website [klug-conservation.com](http://klug-conservation.com).