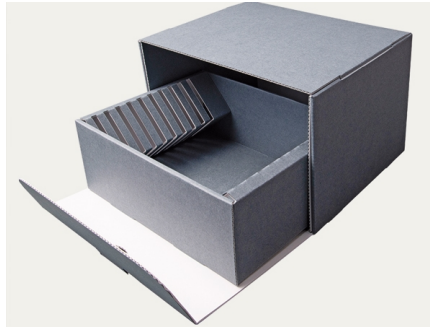


Technical data sheet

[Kopie] von Archival Box - KS 1.5 with slotted inlay (MW 1.65)



Specifications:

Two-piece archival box, comprising a drop-front corpus and an inner pull-out box, for the vertical and gentle storage of up to ten glass plates. The slotted inlay prevents pressure caused by plate-to-plate contact. Stackable. The corpus acts as a placeholder on the shelf.

Sizes ex-stock:

8.5 x 10.5 cm - 10 glass plates, 9 x 12 cm, 10 glass plates, 9 x 12 cm - 10 glass plates, 9 x 13 cm - 10 glass plates, 10 x 15 cm - 10 glass plates, 13 x 18 cm - 10 glass plates, 18 x 24 cm, 10 glass plates, 24 x 30 cm - 10 glass plates

Material characteristics:

Base paper

- 100% bleached cellulose
- without the usage of recycling fibres
- free of wooden fibres
- Kappa level < 5 = lignin-free
- pH 7.5 - 10.0 = acid-free (in accordance with ISO 6588-1:2020)
- alkaline buffer > 2% natural calcium carbonate (GCC)
- sizing: neutral/synthetic (without alum additive)
- top surface sizing: Cobb₆₀ in accordance with ISO 535 < 25
- without optical brightening agents
- light-fastness approx. 7 – 8 (= extremely good) in accordance with the wool scale (EN ISO 105-B02)
- no bleeding in accordance with DIN ISO 16245:2012
- special surface strengthening (dirt-resistant and erasable)
- Photographic Activity Test (PAT) passed in accordance with ISO 18916:2007

Glue used for the corrugated board

- starch-based adhesive
- pH > 8.0
- moisture-proof gumming

Further information, such as our Quality Guarantee, certificates of independent testing institutions and information regarding application methods and instructions are stated on our website klug-conservation.com.