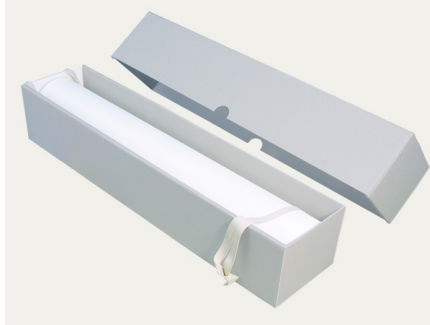


Technical data sheet

Two-piece box - KS 16 with tube insert



Specifications:

Roll storage boxes suitable for large-size and delicate archival objects. (e.g. geographical/architectural maps, textiles etc.) The tube in the box is made from spirally wound conservation board and is supported by two layers of corrugated board.

Sizes ex-stock:

1100 x 150 x 150/150 mm, 1300 x 150 x 150/150 mm, 1500 x 200 x 200/200 mm, 1720 x 380 x 380/380 mm, 800 x 150 x 150/150 mm

Material characteristics:

Base paper

- 100% bleached cellulose
- without the usage of recycling fibres
- free of wooden fibres
- Kappa level < 5 = lignin-free
- pH 7.5 - 10.0 = acid-free (in accordance with ISO 6588-1:2012)
- alkaline buffer > 2% natural calcium carbonate (GCC)
- sizing: neutral/synthetic (without alum additive)
- without optical brightening agents
- Photographic Activity Test (PAT) passed in accordance with ISO 18916:2007

Glue used for the corrugated board

- starch-based adhesive
- pH > 8.0
- moisture-proof gumming

Further information, such as our Quality Guarantee, certificates of independent testing institutions and information regarding application methods and instructions are stated on our website klug-conservation.com.