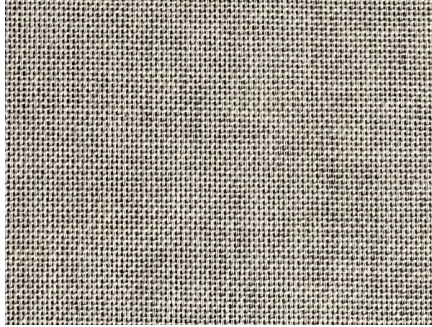


## Technical data sheet

Clamshell box - KS 18 - Premium, Natural linen, Lino Auster 2024



### Specifications:

A tightly closing, premium clamshell box; a more elaborate version of the known "Solander Box". Manufactured whilst using the finest book binding methods, this classical drop-back clamshell box is produced from solid conservation board with a complete fabric lining. Special emphasis has been given to ageing resistant and environmentally compatible (less-polluting) materials.

### Sizes ex-stock:

refer to our website [klug-conservation.com](http://klug-conservation.com)

### Material characteristics:

#### Fabric

- warp: cotton
- 26 warp threads per cm<sup>2</sup>
- filling thread (weft thread): 100% cotton
- 12 filling threads per cm<sup>2</sup>
- thickness 0.44 mm
- weight 268 gsm
- FSC® certified, GFA-COC-003913

#### Paper used for lamination

- 35 gsm, pH neutral

#### Adhesive used for lamination

- acrylic glue
- free of softeners and plasticizers

Further information, such as our Quality Guarantee, certificates of independent testing institutions and information regarding application methods and instructions are stated on our website [klug-conservation.com](http://klug-conservation.com).