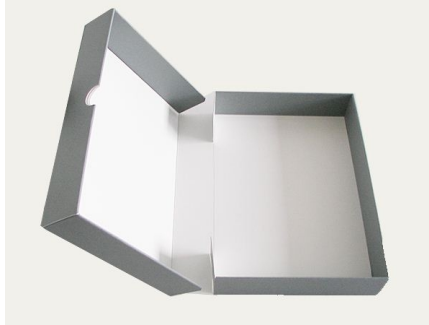


## Technical data sheet

Clamshell box - KS 20 solid board – grey-blue – natural white



### Specifications:

A tightly closing, premium quality clamshell box with round about double walled construction. Made from solid board material, approx. 1.5 - 5.0 mm thickness.

### Sizes ex-stock:

### Material characteristics:

#### Board

- 100% bleached cellulose
- without the usage of recycling fibres
- free of wooden fibres
- Kappa level 1 – 2 = lignin-free
- pH 7.5 - 10.0 = acid-free (in accordance with ISO 6588-1:2020)
- alkaline buffer > 3% natural calcium carbonate (GCC)
- sizing: neutral/synthetic (without alum additive)
- without optical brightening agents
- light-fastness approx. 7 – 8 (= extremely good) in accordance with the wool scale (EN ISO 105-B02)
- top ply solid grey-blue, base ply natural white
- no bleeding in accordance with DIN ISO 16245:2012
- special surface strengthening (dirt-resistant and erasable)
- Photographic Activity Test (PAT) passed in accordance with ISO 18916:2007

#### Glue used for lamination

- dispersion glue free of solvents and plasticizers (softening agents)
- pH approx. 7.0
- Photographic Activity Test (PAT) passed in accordance with ISO 18916:2007

Further information, such as our Quality Guarantee, certificates of independent testing institutions and information regarding application methods and instructions are stated on our website [klug-conservation.com](http://klug-conservation.com).